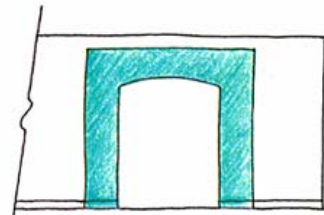




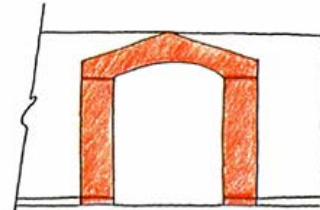
This 25,000 sq. ft. office was designed to appeal to women of all ages, and young children, who often accompany their mothers. The clients (an OB/GYN group of 6 women) wanted the facility to communicate the progressive, caring attitude they bring to the practice of medicine. They asked that the interior space be "inviting, fresh and non-institutional, with lots of daylight and touches of whimsy." They also wanted their 2nd floor offices to be "compatible, but not identical" with the 50,000 sq. ft. hospital (interior design also by Laurie Smith Design Associates) located in the same Medical Office Building.

Simple architectural forms, color, lighting, furnishings and art were used to create an upbeat, hospitable environment on a tight budget. Bright colors were used to facilitate wayfinding. A rotunda with a curved stair leads to the clinic floor where individual doctors' areas are identified by portals (pictured in above photo). Each doctor chose a portal design and color from a series developed by LSDA (see sketches and floor plan on next pages). Signature colors were repeated on curved walls in the long corridors. Wood floors and soft lighting were used as welcoming touches. Original artwork by local women artists was featured throughout the space.

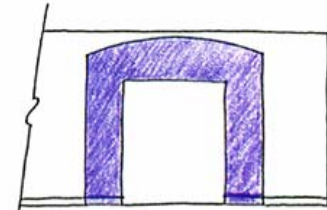
*The OB/GYN office received a design excellence award from the American Society of Interior Designers /Austin and the project was published in TEXAS ARCHITECT & INTERIORS & SOURCES magazine. LSDA was responsible for selecting interior architectural finishes, furnishings and artwork, as well as lighting design, custom millwork and developing some interior architectural details (including the design of signature portals), as part of the design team. HKS served as the architect of record for the building with Tom Hatch acting as a consulting architect. Photography is by R. Greg Hursley.*



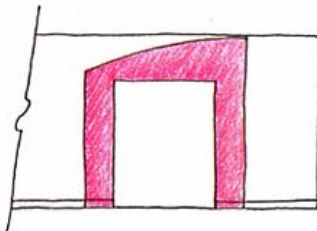
PORTAL A



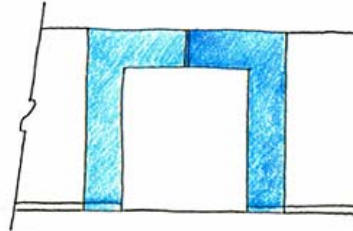
PORTAL B



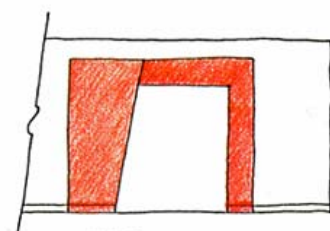
PORTAL C



PORTAL D



PORTAL E



PORTAL F

